

موانئ أبوظبي
ABU DHABI PORTS

NOTICE TO MARINERS

Khalifa Port – Inner Harbour Channel

To: All Ports Users, Agents and all other concerned parties

Summary

This notice provides information regarding Navigation inside The Khalifa Port Inner Harbour Channel between Khalifa Port Basin and Construction Jetty

In order to enhance the safety of navigation within the port basin, a New Inner Harbour Channel (IHC) buoys been deployed considering the below:

1. Night Navigation will commence inside The Khalifa Port Inner Harbour Channel between Khalifa Port Basin and the construction jetty.
2. Following conditions apply to ensure safety of navigation at all times:
 - 2.1 Pilotage is compulsory at all times for Tug Masters without Valid Pilot Exemption Certificate issued by Khalifa Port Harbour Master.
 - 2.2 It is Compulsory to engage at least one (1) assistance tug (Abu Dhabi Ports Approved Licensed Tugs).
 - 2.3 Any vessels and/or combination units intend to use Inner Harbour Channel shall not exceed 3.20 meters on her draughts.
 - 2.4 Visibility not less than one (1) nautical mile.
 - 2.5 Maximum wind speed not to exceed twenty (20) knots.
3. Vessels and combination units shall not exit from the channel except in an emergency situation and not to impede navigation passage inside the channel.
4. All vessels intends to use the IHC must take permission from the VTS and to report while passing HM buoy inbound and outbound.

AD Ports Marine Notice

5. Refer to Khalifa Port Regulations and requirements for obtaining Pilot Exemption Certificate.
6. Aids to navigations marks and buoys have been deployed in below positions.

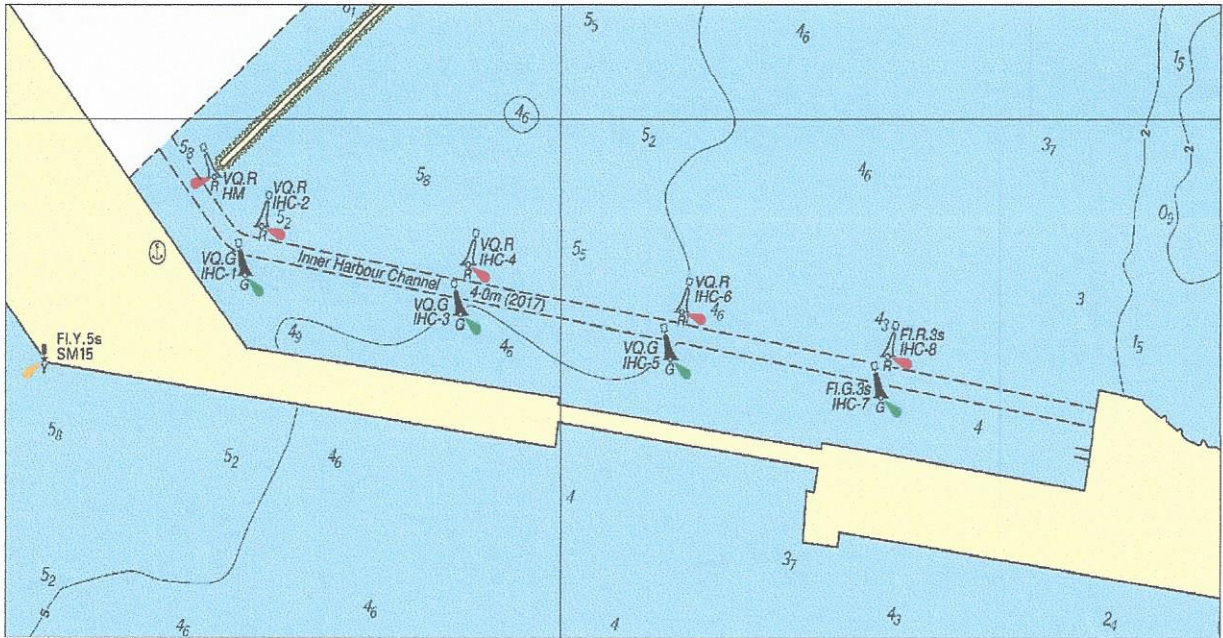
Buoy ID	Type	Color	Characteristics	Position	
				LAT	LONG
IHC1	Lateral mark	Green	FI G.VQ	24°47.737'N	054°39.295'E
IHC2	Lateral mark	Red	FI R.VQ	24°47.819'N	054°39.332'E
IHC3	Lateral mark	Green	FI G.VQ	24°47.668'N	054°39.776'E
IHC4	Lateral mark	Red	FI R.VQ	24°47.755'N	054°39.792'E
IHC5	Lateral mark	Green	FI G.VQ	24°47.591'N	054°40.244'E
IHC6	Lateral mark	Red	FI R.VQ	24°47.673'N	054°40.269'E
IHC7	Lateral mark	Green	FI G.3s	24°47.526'N	054°40.713'E
IHC8	Lateral mark	Red	FI R.3s	24°47.596'N	054°40.729'E

Mariners shall adhere to all applicable rules and regulations, Khalifa Port Harbour Master Directions and VTS instructions at all times.

Attachment: Appendix 1




CAPTAIN / ADIL AHMED BANIHAMMAD
CHIEF HARBOUR MASTER



Appendix 1 Inner Harbour Channel (IHC)