

موانئ أبوظبي ABU DHABI PORTS

Channel Enhancement Project – Khalifa Port

To: Khalifa Port User, Masters and Vessel Owners

Khalifa Port is carrying out a navigational channel enhancement project to widen the existing channel and to extend its depth in order to receive larger vessels in Khalifa Port within the affected area are indicated in the below, initial phase will commence to extend the expansion area for dredging operation (refer to Khalifa Port widening and deepening – outside channel figure).

Khalifa Port Channel and Maneuvering Basin will remain fully operational during the course of the proposed expansion project and dredging operation for all vessels calling to Khalifa Port. Navigational Marks will remain same at this phase, for any deviation; navigational warning will be provided directly to vessels which may require to be notified with an immediate response inside the Port Limit.

Affected area is located between the following coordinates:

Lat 24°54'72" N Long 054°35'92" E

Lat 24 °54'74" N Long 054 °35'94" E

Lat 24°51'23" N Long 054 °39'09" E

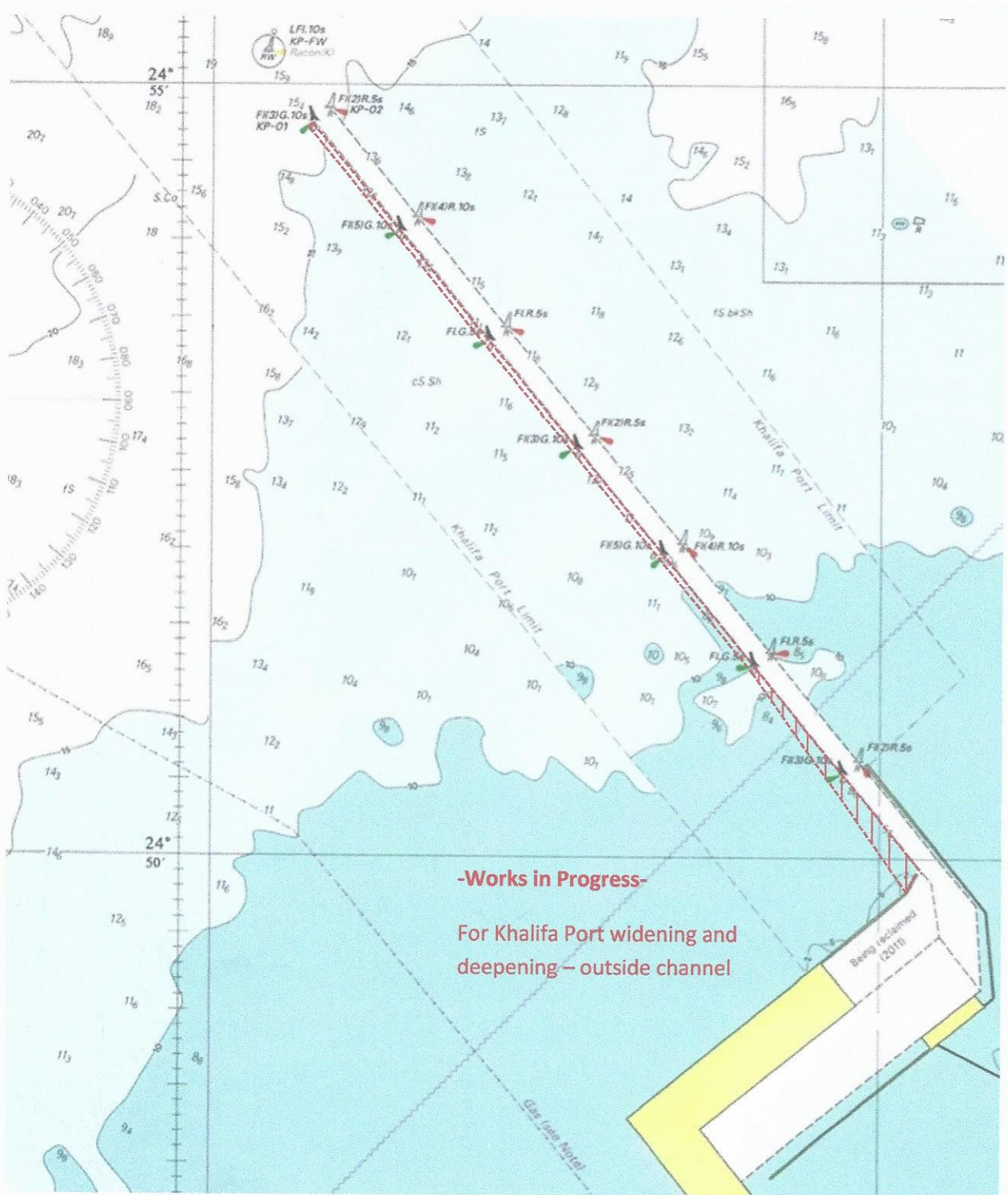
Lat 24 °51'25" N Long 054 °39'10"E

Lat 24 °50'48" N Long 054 °39'70" E

Lat 24 °50'52" N Long 054 °39'78" E

Lat 24 °49'82" N Long 054 °40'42" E

Lat 24 °49'93" N Long 054 °40'29" E



(Khalifa Port widening and deepening – outside channel figure)

This Notice to Mariner will be updated occasionally with respect to the dredging activities inside the Port Limit. However; all Port Users are requested to navigate with cautions.

Your compliance with above is required with an immediate effects.

Regards,



Capt. Ammar Al Shaiba
Khalifa Port – Harbour Master

Abu Dhabi Ports
 PO Box 54477 Abu Dhabi UAE

Telephone +971 2 695 2000
 Facsimile +971 2 695 2177

موانئ أبوظبي
 ص.ب. 00000 أبو ظبي الإمارات العربية المتحدة