

14th August 2014

Direction No. MUS 01/2014

Reference no.: ADPC-PO-HM-LTR 00201



Musaffah Port, Harbour Master Directions

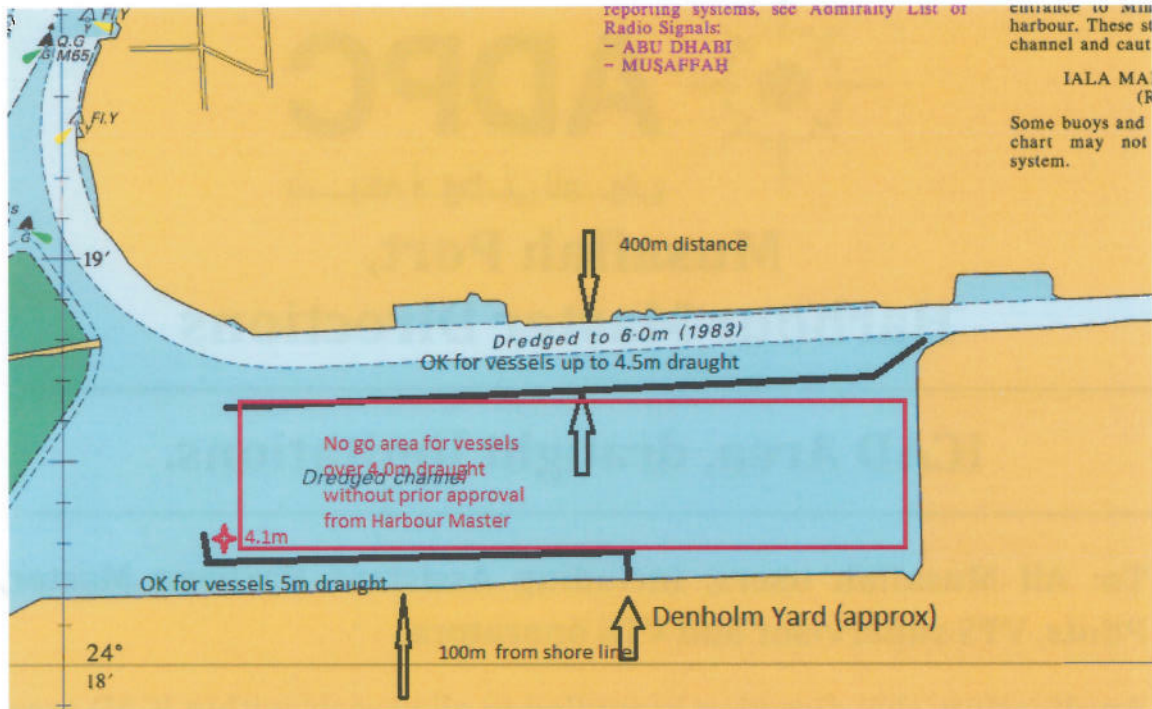
ICAD Area, draught limitations.

To: All Musaffah users, including Assistant Harbour Master, Pilots, VTS supervisor and VTS operators.

Application: this direction is applied to all vessels within ICAD area, Musaffah Port.

To ensure safe navigation of all vessels, please note that any vessel entering the ICAD area with a deeper draught than **4.5m** using the North side of the channel or deeper than **5.0m** using the South side from approximately Denholm yard towards Procellan jetty must obtain prior permission from the Harbour Master well in advance of any proposed move and follow the paths laid out in the attached chartlet.

In addition the middle area so marked is not to be used by vessels with a greater draught than **4.0m** without prior authorisation.



Capt. John Clayton
Musaffah Port Harbour Master

CC: Chief harbour Master